



User Manual





My Robot Home Plus

Screws:

(A)  Ø3.0*40 4+1 Pcs

(B)  M6*30 4 Pcs

(C)  Ø3.5*30 12+1 Pcs

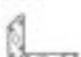
(D)  Ø3.5*25 13+1 Pcs

(E)  Ø3.0*18 8+1 Pcs

(F)  2 Pcs

(G)  2 Pcs

(I)  10cm 2 Pcs

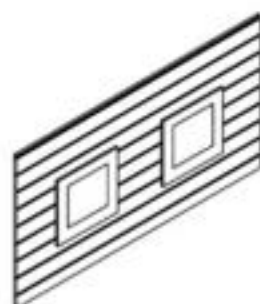
(J)  5*5cm 2 Pcs

(K)  2 Pcs

(L)  2 Pcs

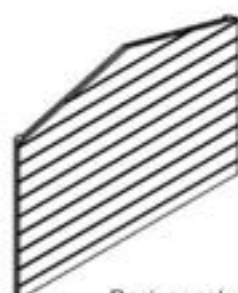
(M)  1 Pcs

①



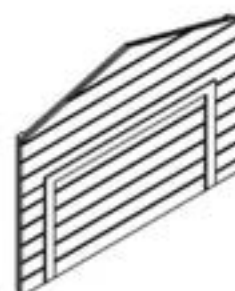
Side panel x2 Pcs

②



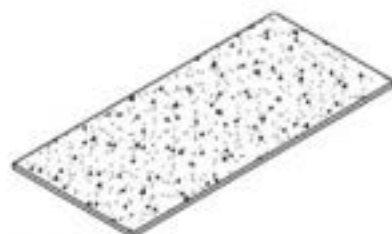
Back panel x1 Pc

③



Front panel x1 Pc

④



Roof x2 Pcs

⑤



Roof cap x1 Pc

⑥



Wood bar x1 Pc

⑦



Wood side bar x2 Pcs

⑧



Metal bar x1 Pc

⑨



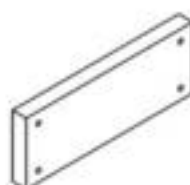
Metal side bar x2 Pcs

⑩



Metal middle bar x2 Pcs

⑪



Metal plates x 2 Pcs

⑫



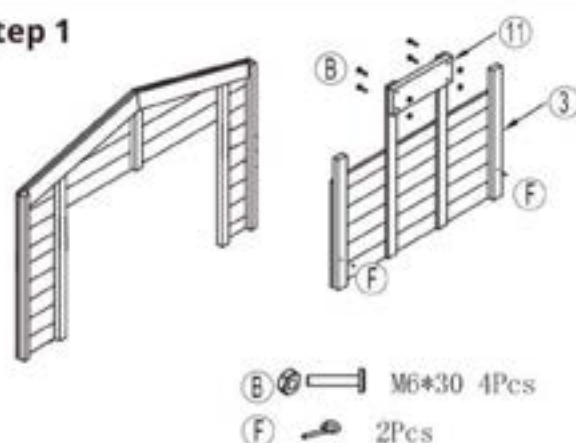
White PVC sign x1 Pcs

BEFORE STARTING THE INSTALLATION:

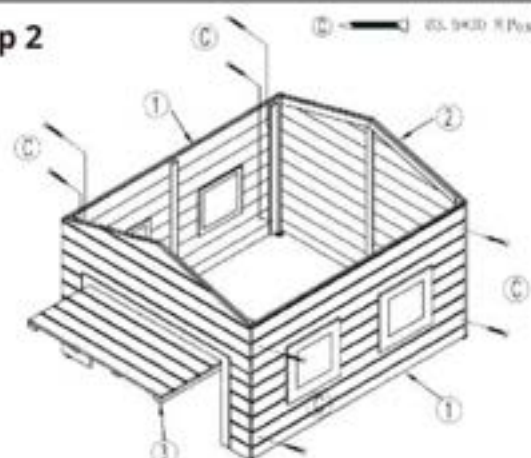
For the best result AM ROBOTS recommend placing the garage on concrete, brick or a similar flat and hard surface.

If installed on grass, AM ROBOTS recommends that you put small bricks under the feet on all 4 corners, to support the garage, and to make sure that the garage does not sink into the ground.

Step 1

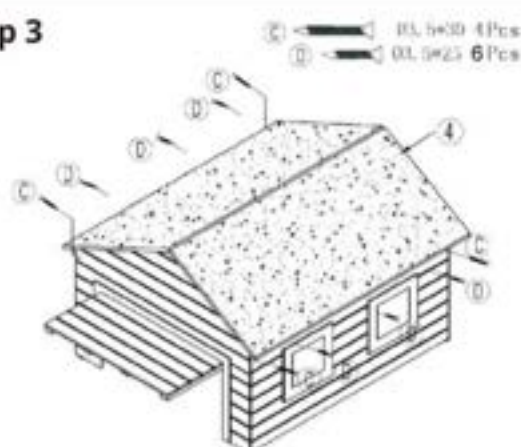


Step 2



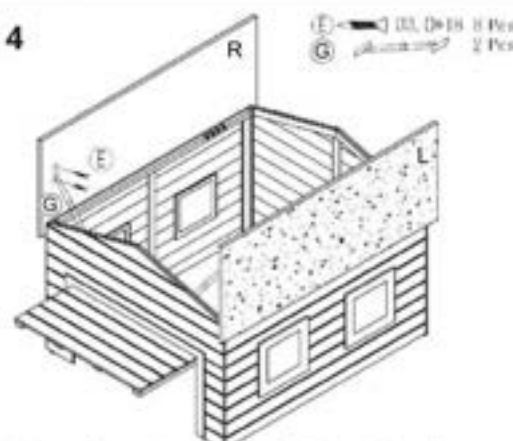
Use 8 pcs of Screw C to assemble the walls.

Step 3



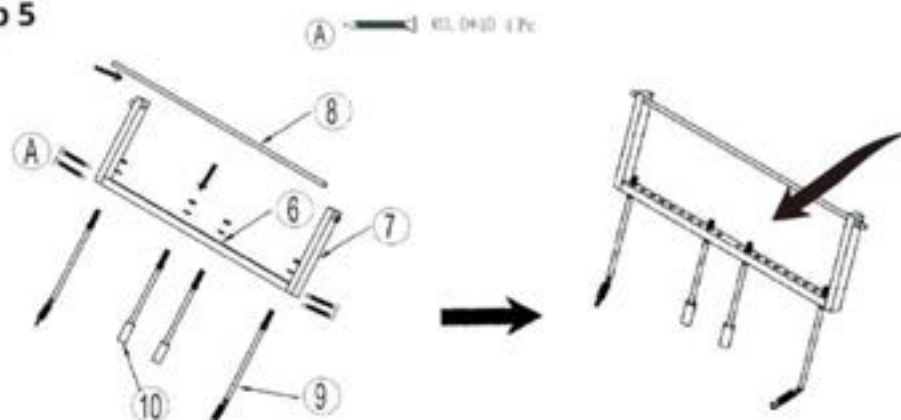
Use 4 pcs of Screw C and 4 pcs of Screw D to attach the roof

Step 4



Use 8 pcs of screw E to attach the hinges G to the pre-drilled holes in the roof panel and the front panel.

Step 5

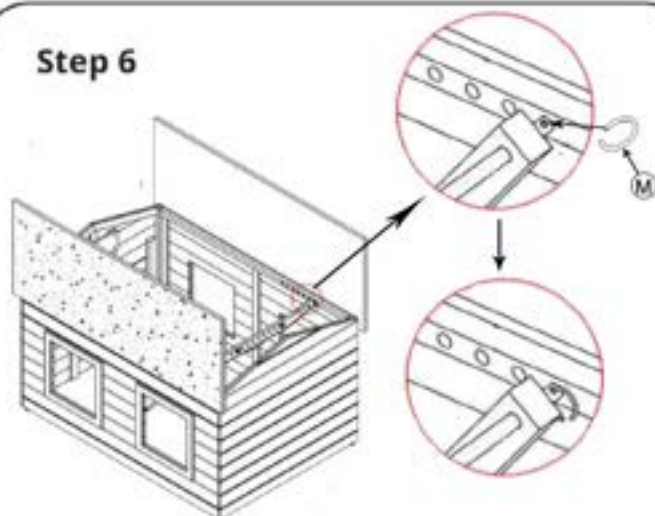


Remark:

Remember to tighten the nut on the metal post - on both sides of the wooden panel.

The metal posts must be completely fixed so that they cannot move individually.

Step 6



First, insert the iron bar with a hole side into the side panel marked with L, and then put the other side into the panel mark R. Push the iron bar to the bottom to R side until the hole of the iron bar is exposed, and insert the pin M into the hole to fix it.

Step 7

D 03.5725 3pcs



Use 3 pcs of screw D to attach the roof cap.

Step 8

K 2 Pcs



Use 2 pcs of screw L to add the White PVC sign if desired. And add the solar light on the front panel.

Step 9

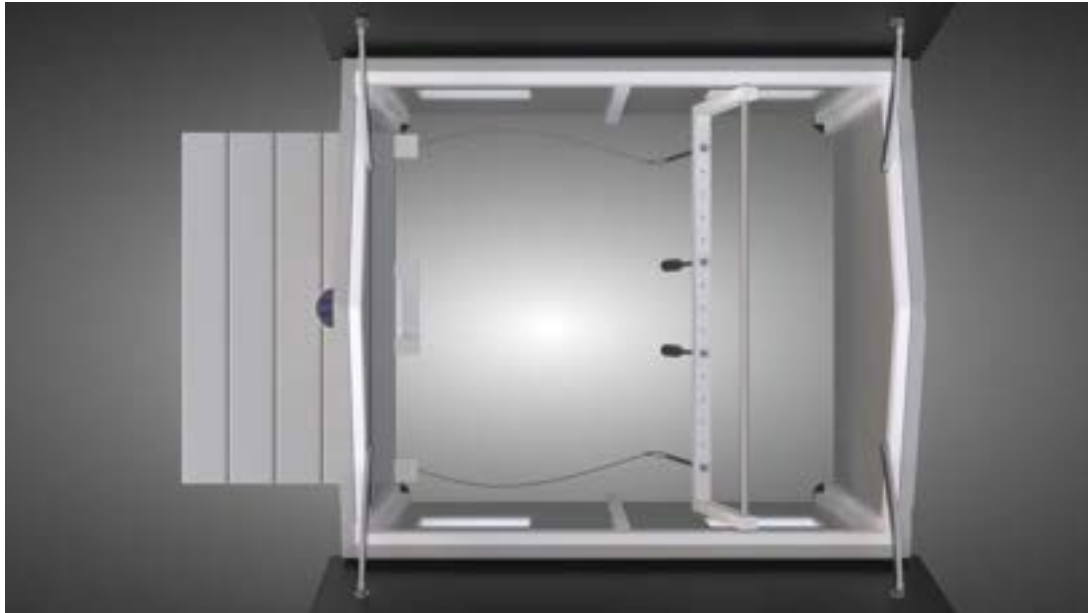
Adjust the level feet below the garage, so the port does not touch the ground/grass.



Remark:

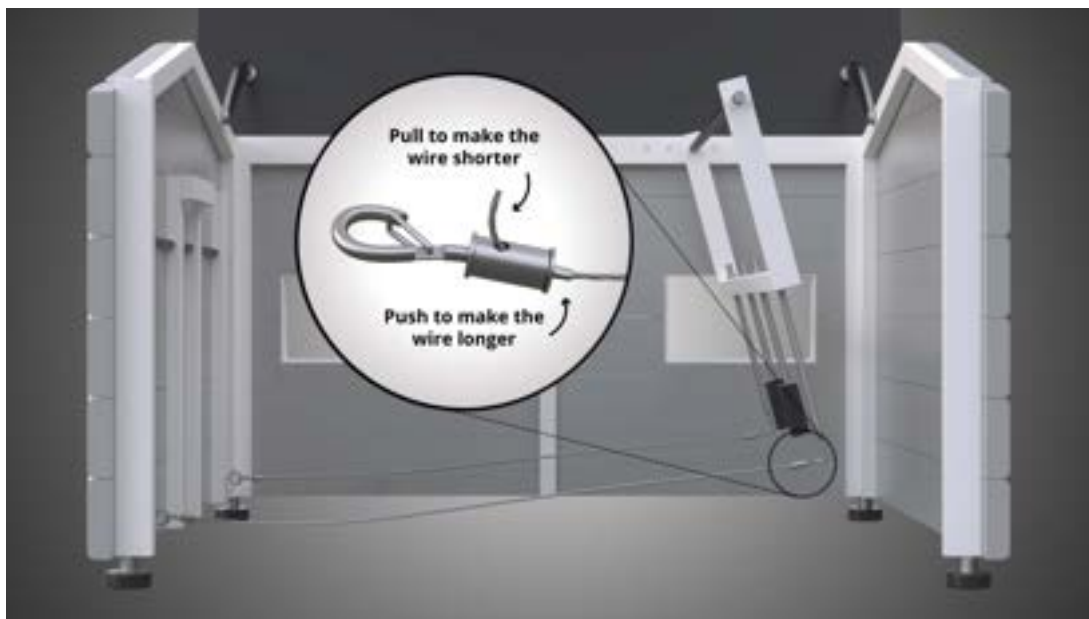
We also have the Angle bracket with long spikes. (Part J & Part H)
If you want to fix the house to the ground,
please use screw D to connect the Angle
Bracket (H) to the house.
Make sure the long spikes (J) are fixed in the ground.

Step 1 - Adjust the mechanism to the docking station



Place the robot inside the Garage and adjust the 2 poles to fit the docking station and the robotic lawn mower.

Step 2 - Fit the string to adjust the tension of the automatic door.



Close the port using a rock or similar, and adjust the wires to fit the position between the door, robot and docking station.

TROUBLESHOOTING:

- 1.If the door cannot open or close completely: Inspect the feet leveler beneath the garage.
- 2.If the door cannot close fully: Return to step 3 and fine-tune the mechanism's angle towards the door to provide a more extended push on the rods for complete closure.
- 3.If the door doesn't fully open: Return to step 3 and adjust the mechanism's angle towards the docking station.
- 4.If the door still struggles to open or lock: Go back to step 2 and readjust the mechanism at the top of the side panels for a optimal position.