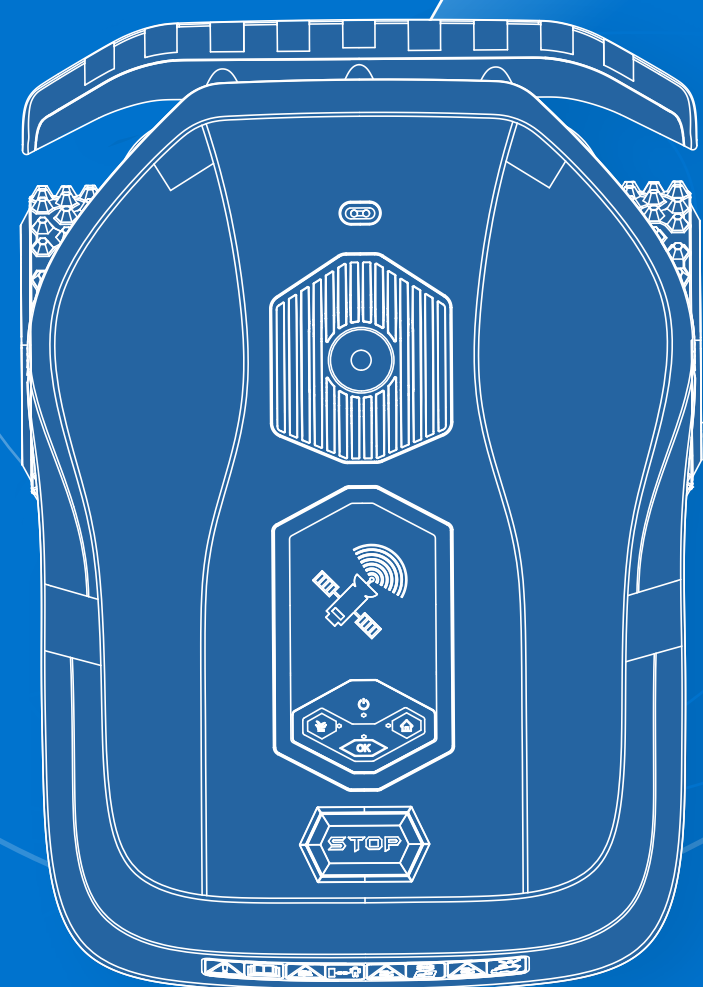


QUICK START GUIDE

STORM

Robotic Lawn Mower

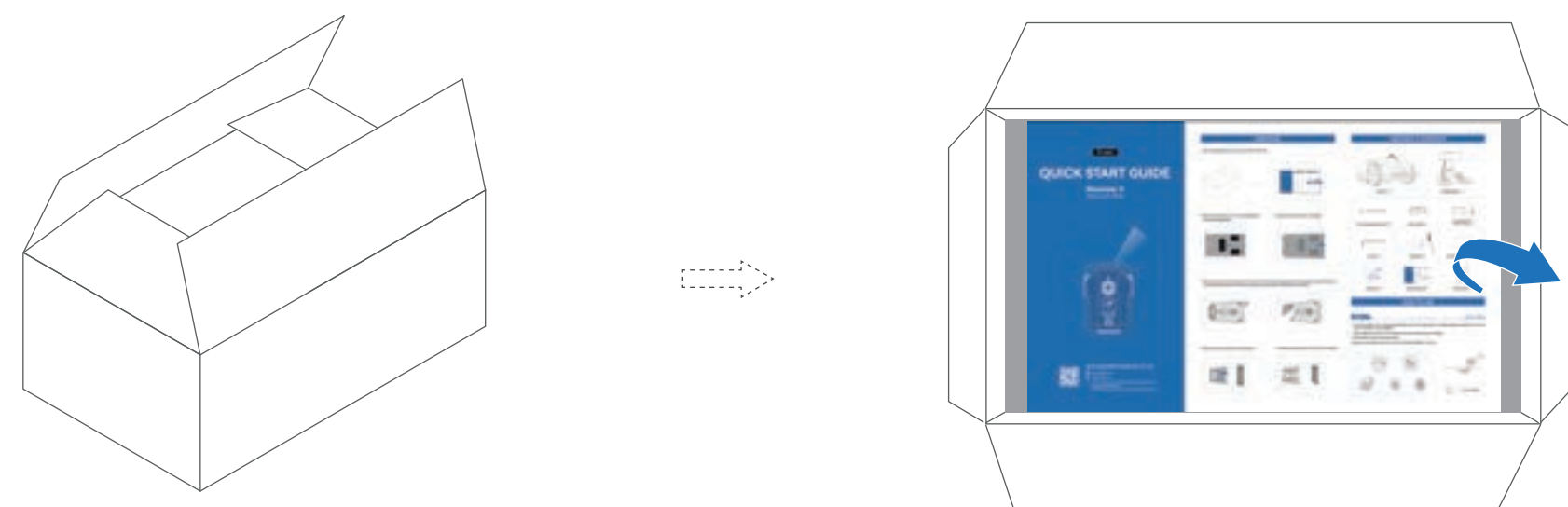


AM ROBOTS

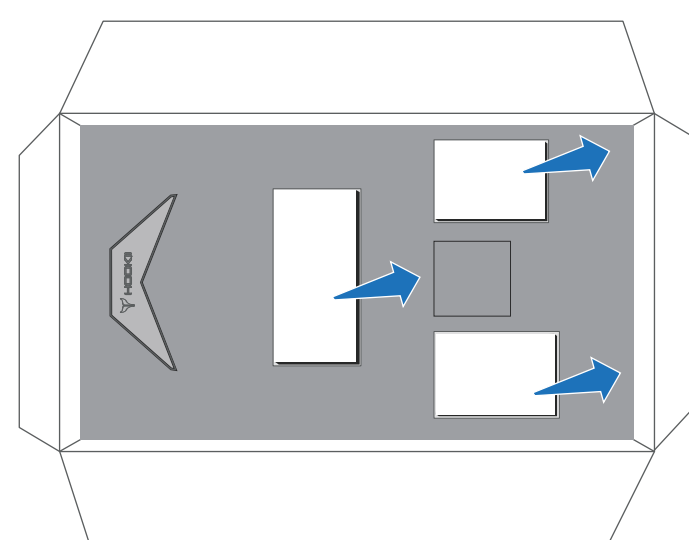
www.am-robots.com
info@am-robots.com
Aa. Louis-Hansens Allé 4, 3060 Espergærde
Denmark

UNBOXING

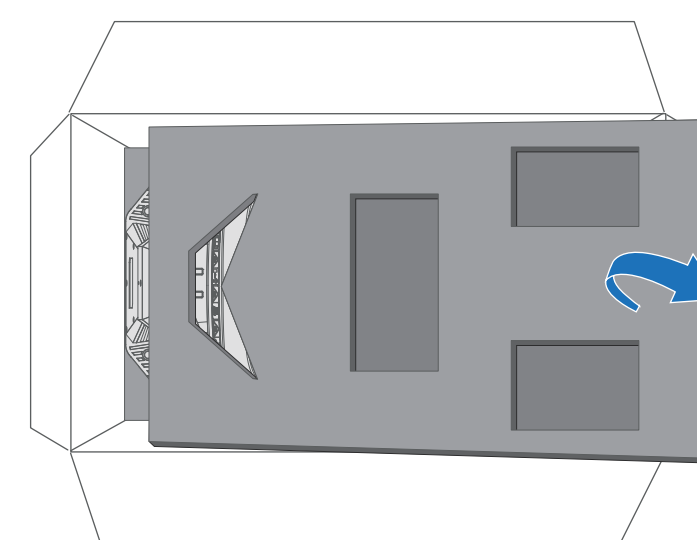
1. Open the packaging and take out the Quick Start Guide on top.



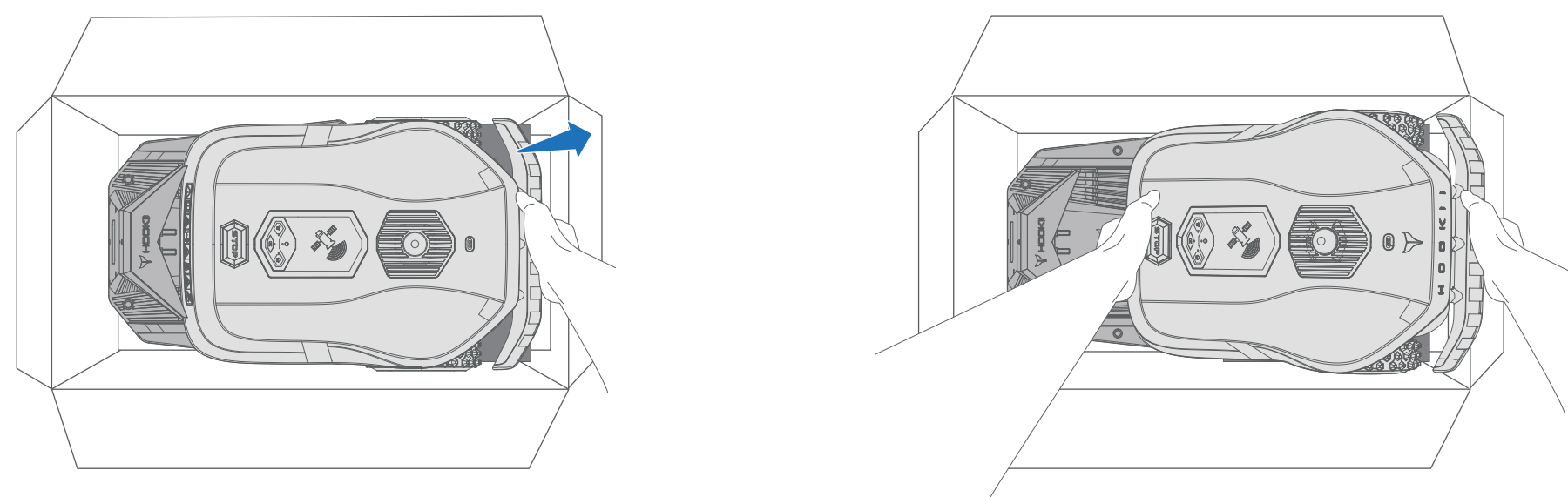
2. Take out the accessories and user manual embedded in the upper packaging foam.



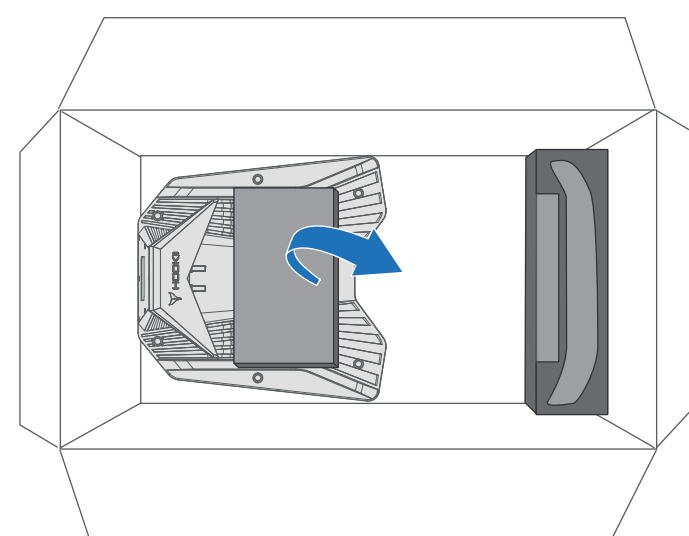
3. Remove the upper foam from the package.



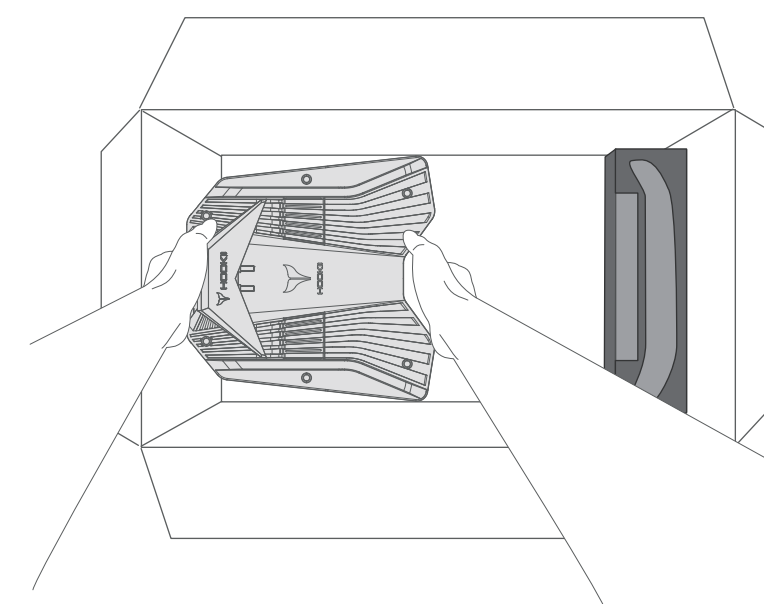
4. Reach your right hand under the bumper of the machine, lift the machine body gently and move it slightly to the right. When there is enough clearance at the tail of the body, extend your left hand under the tail and lift the machine out.



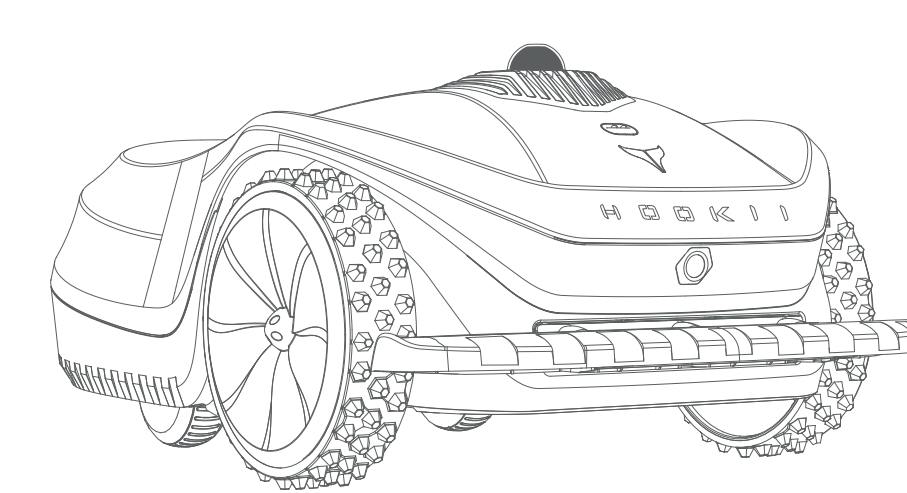
5. Remove the sponge covering the charging station



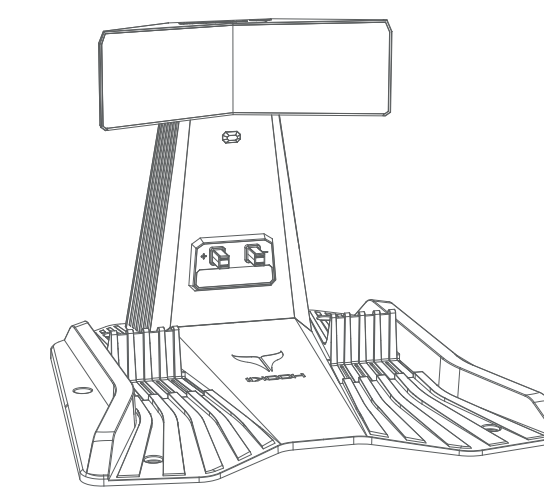
6. Remove the charging station and unboxing is completed.



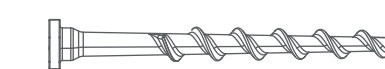
STORM OVERVIEW



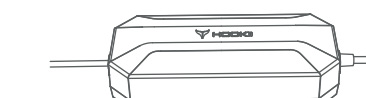
STORM *1



Charging Station *1



Fixed Charging Station Nail *12



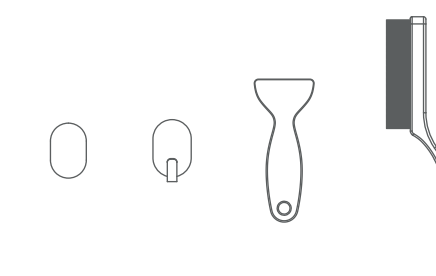
Power Adapter *1



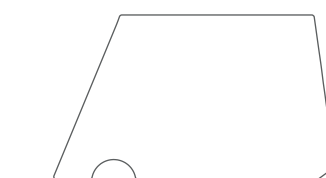
Spare Blade Kit *2
(10screws+10blades)



Hex Key *1



Cleaning Kit *1



Fixed Charging Station Tape *4



User Manual *1



Quick Start Guide *1



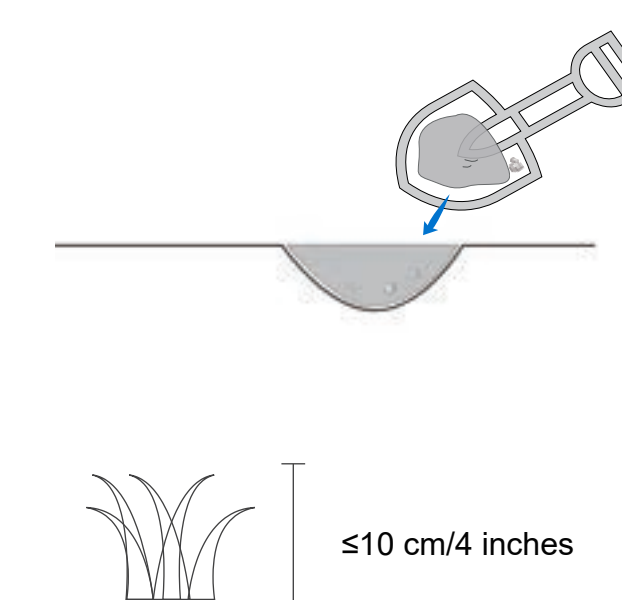
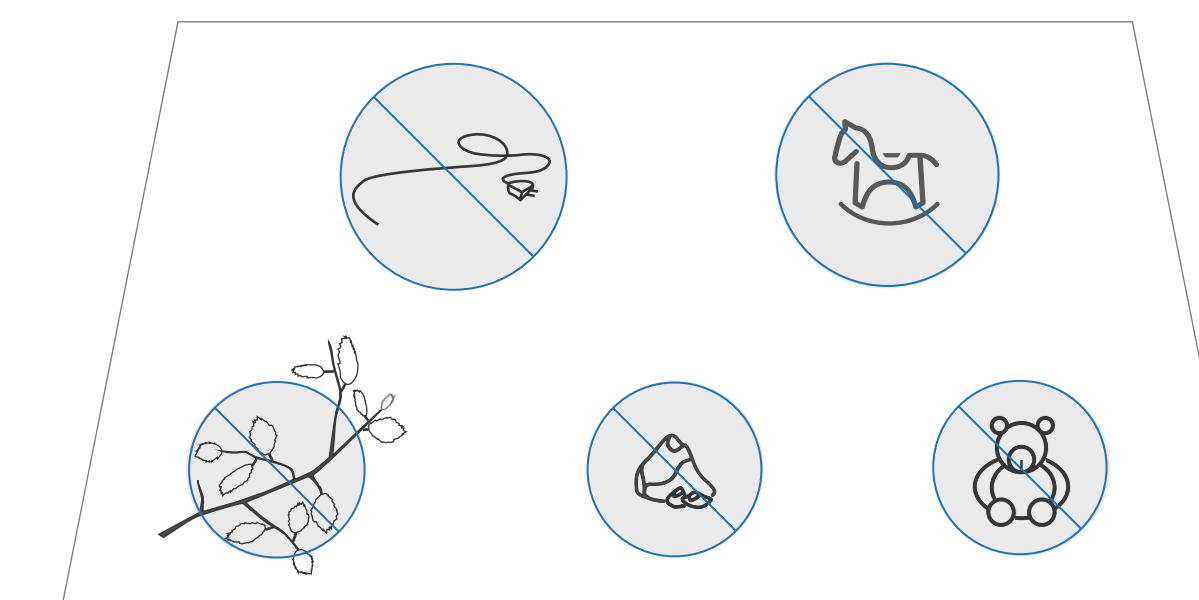
Warranty Card *1

HOW TO USE

STEP 1

Lawn Pre-cleaning

- First, draw a sketch of your courtyard and mark the location of charging station, work area, passage, recharge path, and No-Go zone on the sketch for future reference.
- Clean up debris on the lawn, such as branches, toys, wires, stones, and other obstacles.
- Fill in the pits on the lawn and level the lawn.
- Before using the lawn mower, trim your lawn until the lawn height is ≤ 10 cm/4 in.



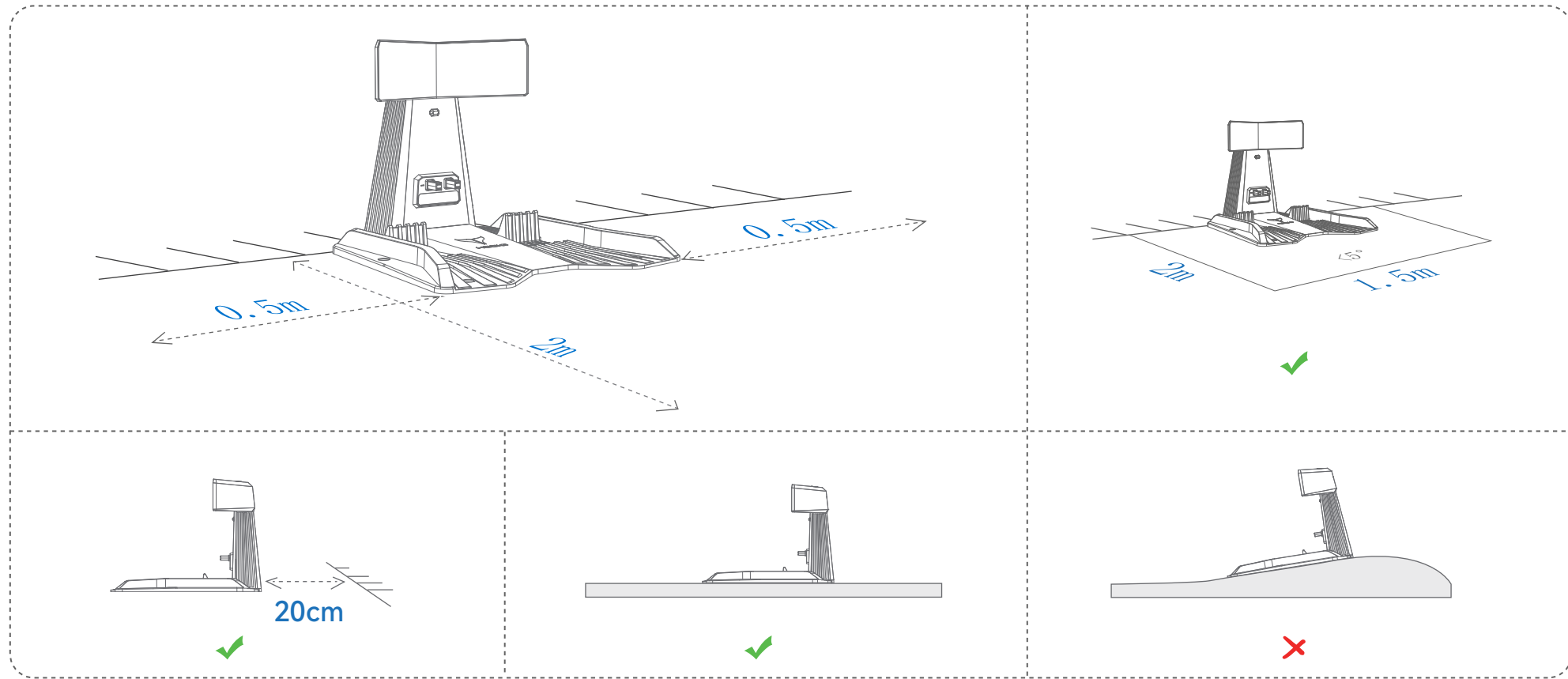
STEP 2

Installing Charging Station

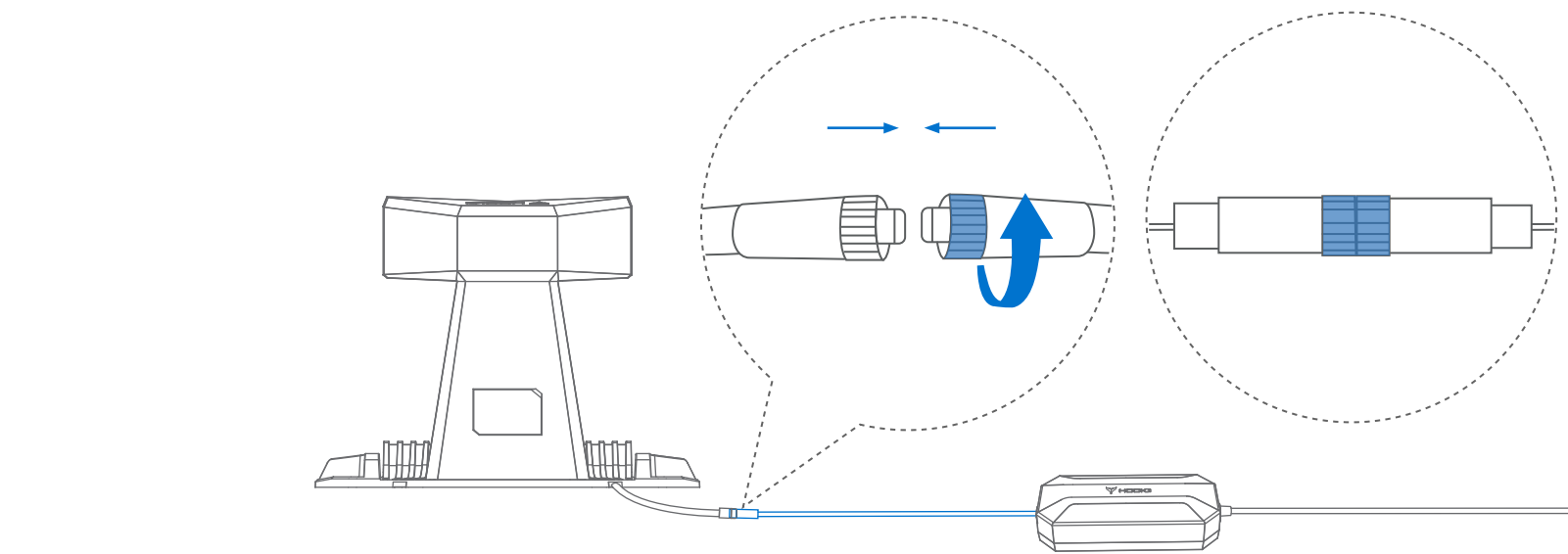
1. Install the charging station on a spacious and flat site.

Ensure that the charging station, when installed on a site, is provided with an unobstructed space of 0.5m on both sides and 2m in front, and the charging station should also be provided with a gentle space of 1.5m around and 2m in front, with a tilt angle of less than 5°.

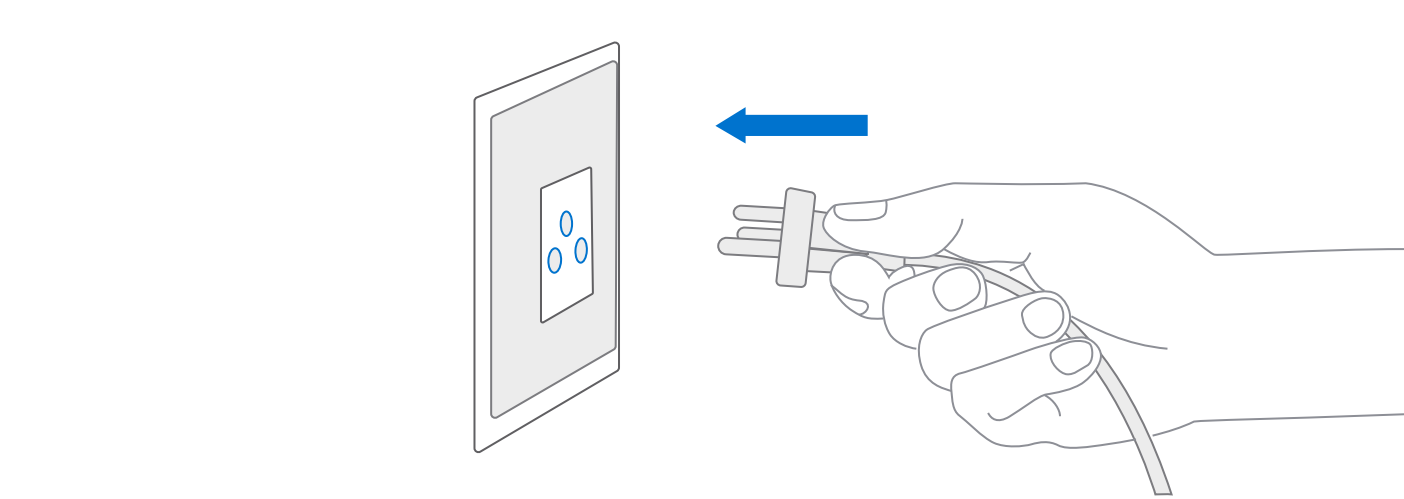
It is necessary to maintain a distance of 20cm between the charging station and the wall when the charging station is installed against the wall.



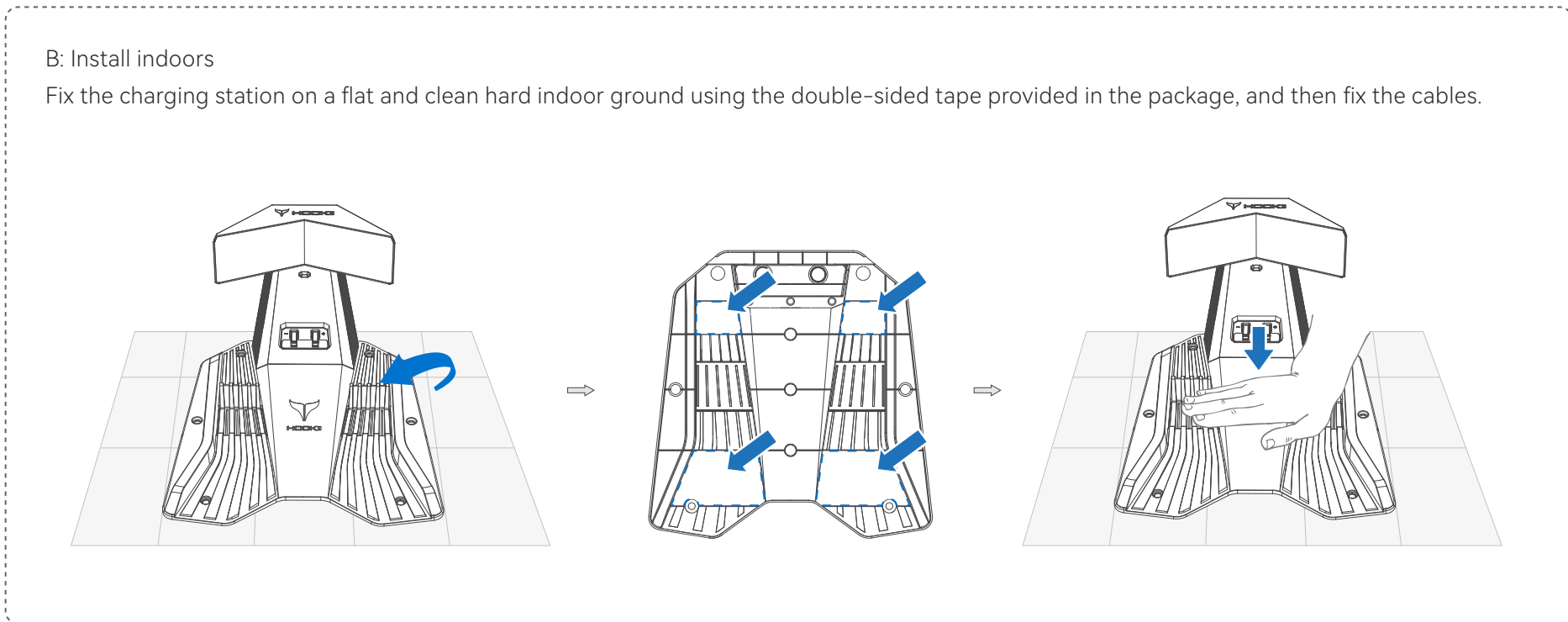
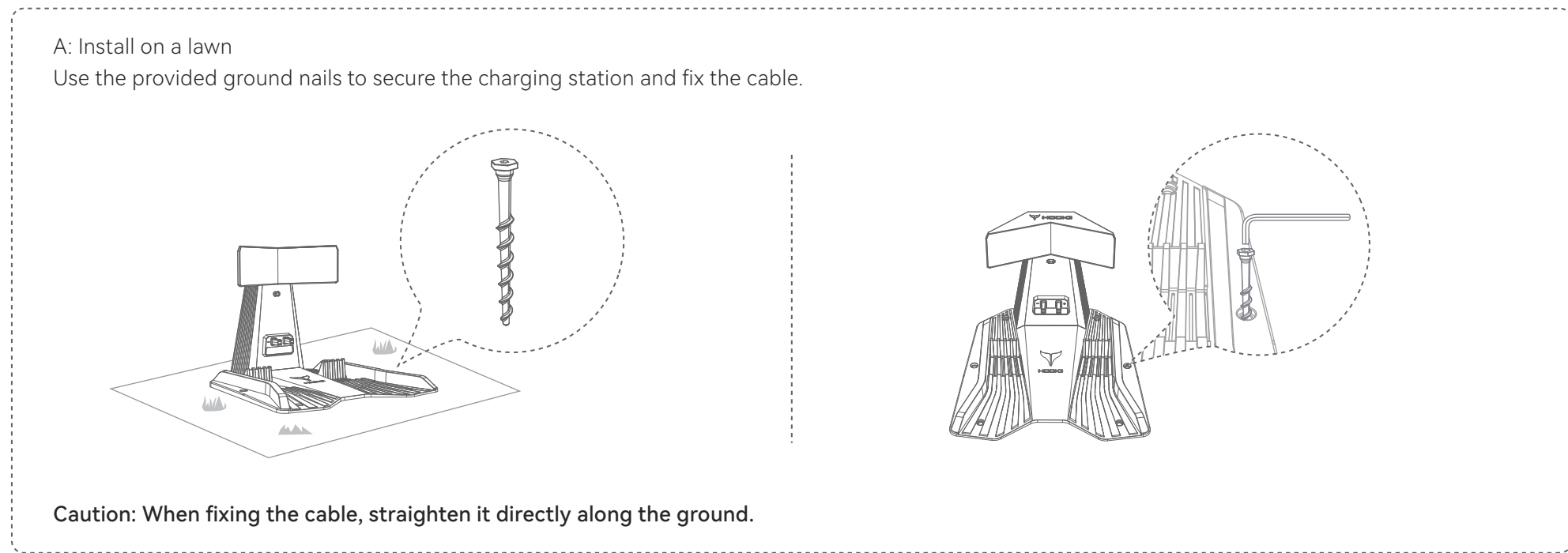
2. Take out the charging station from package, connect the power port to the power adapter cable. If it is necessary to connect an extension cable, connect power port to the extension cable first, and then connect the power adapter.



3. Insert power plug into a suitable power outlet, and then the power indicator light on the charging station will light up.



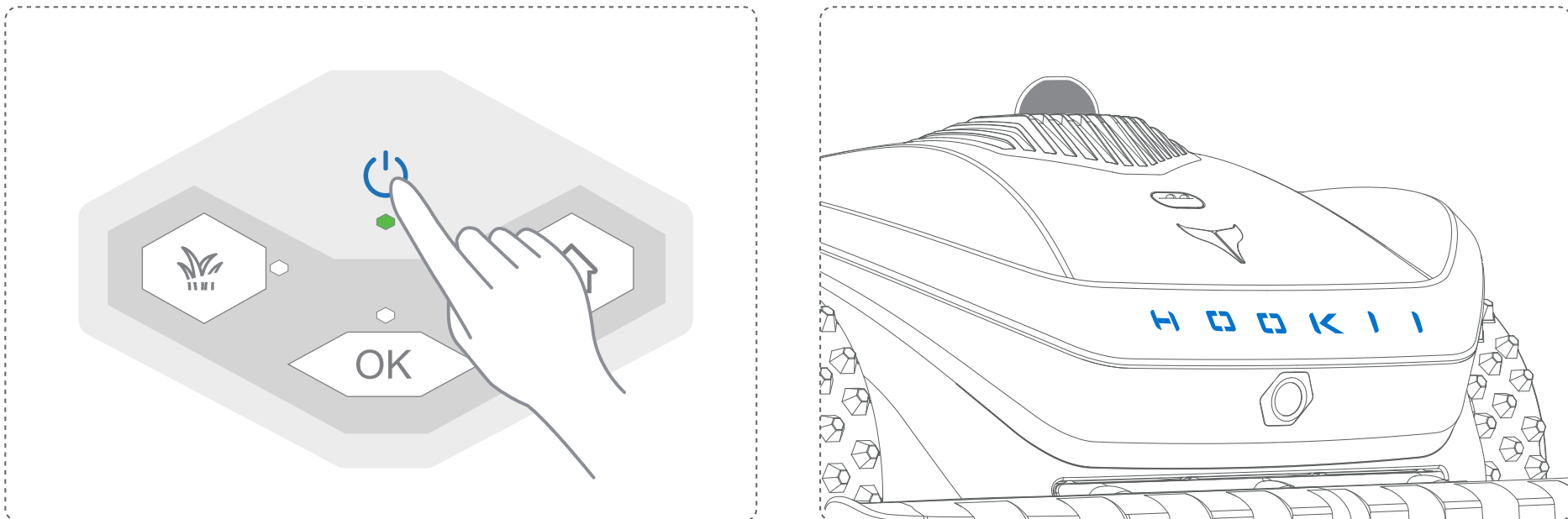
4. Fix the charging station. The fixing method may vary since STORM can be installed on a variety of sites:



STEP 3

Start STORM

- Place STORM on the installed charging station.
- Press and hold the ON/OFF button on the mower to automatically start. During startup, the HOOKII light appears blue.
- When the HOOKII indicator light turns blue and stays on, it indicates that the startup is completed and STORM can be used normally.



STEP 4

Installing HOOKII Neomow App

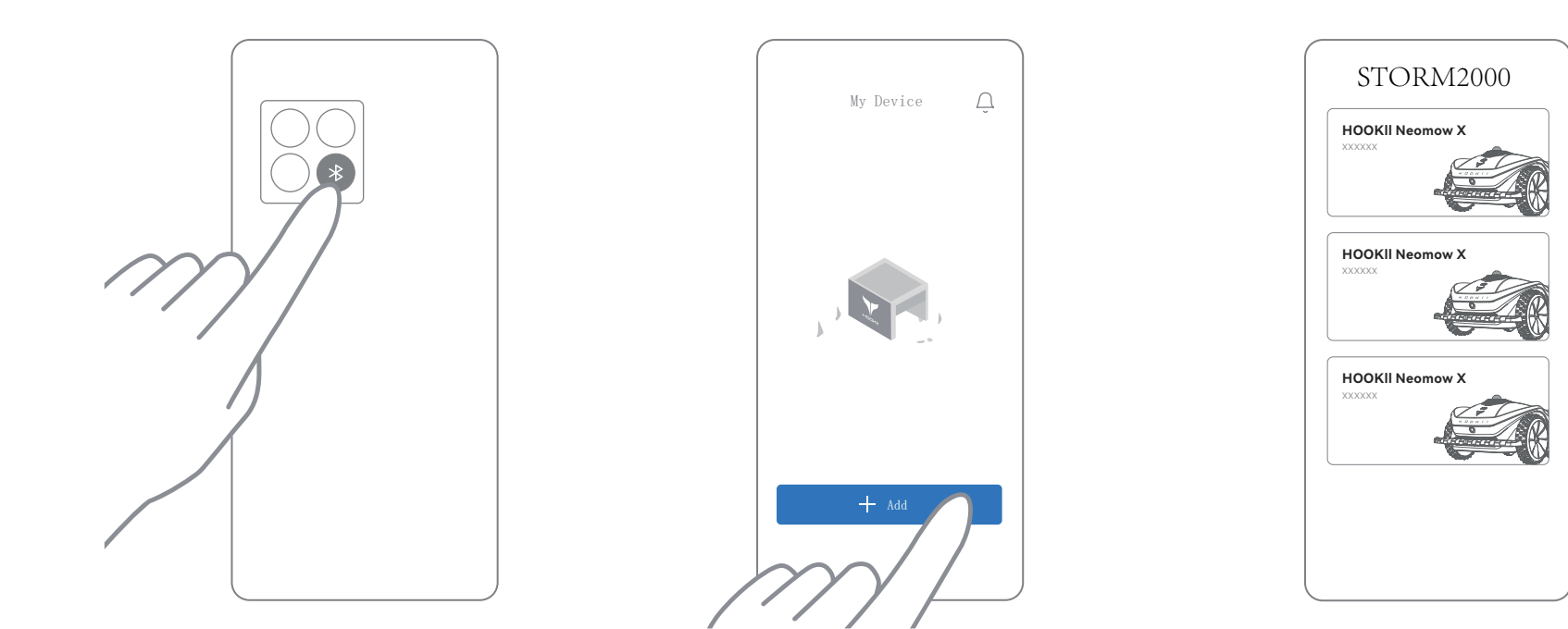


- Search for HOOKII Neomow on Google Play or App Store to download the APP.
- Scan the following QR code and download the APP with a click.

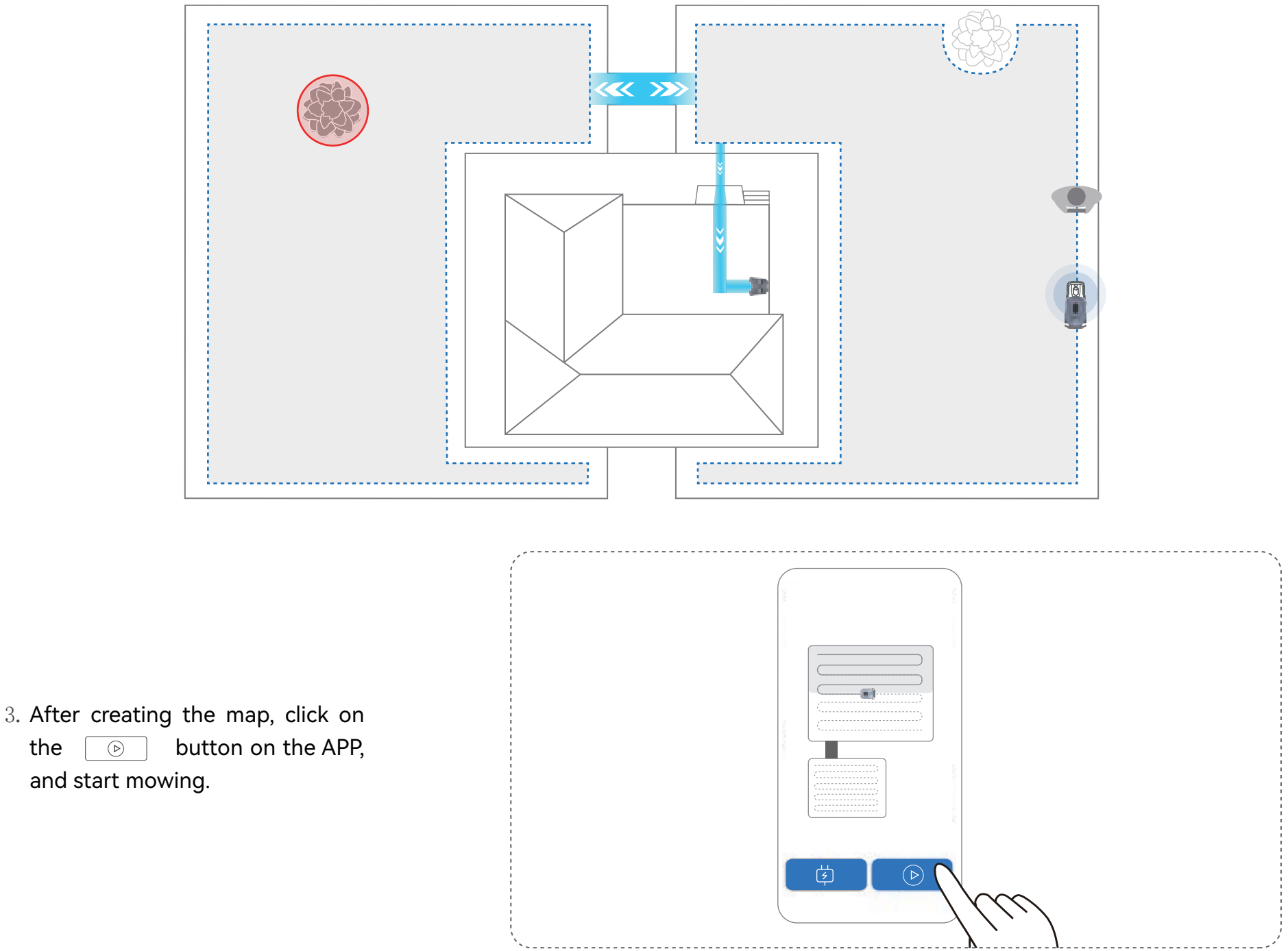
STEP 5

Connecting The Mower, Creating A Map, And Starting Mowing

1. Open your phone's Bluetooth and HOOKII Neomow APP, and add a mower by following the App's instructions.

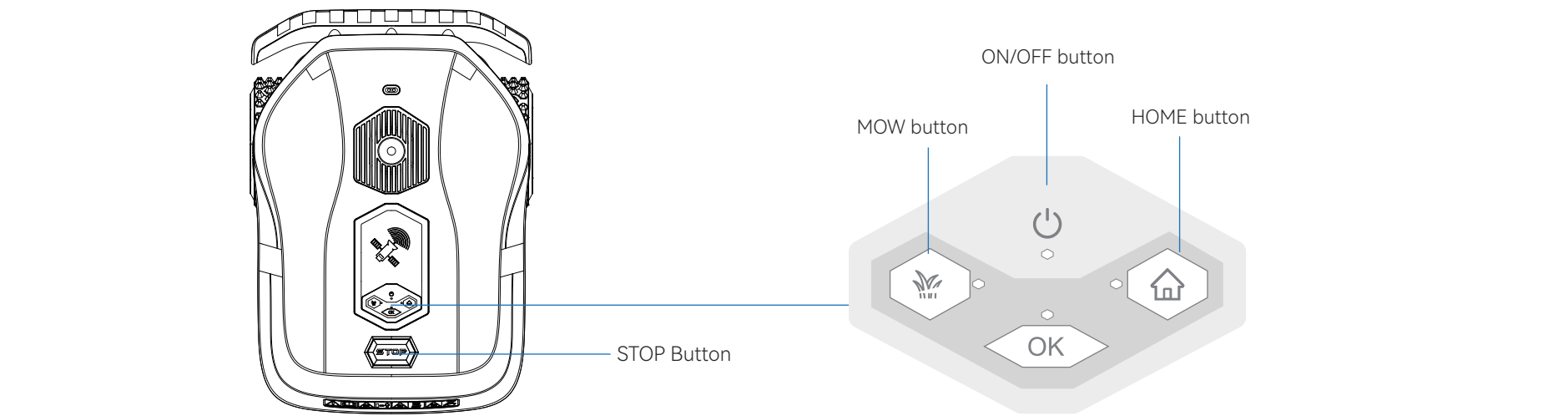


2. Connect the mower and remotely control the robot to create a lawn map, including mowing area, No-Go zone, passage, and recharge path.

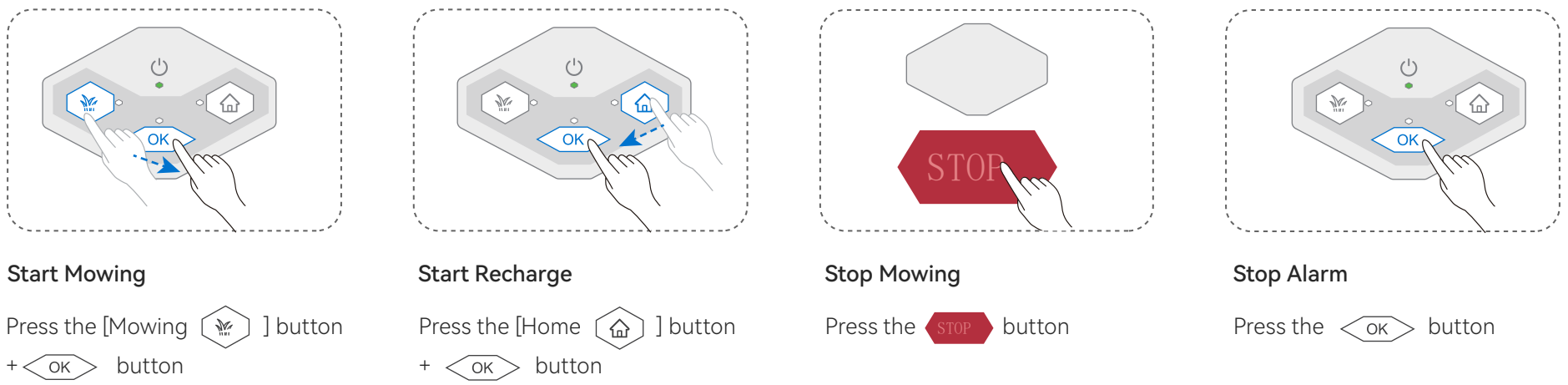


Button Operation

Know The Buttons



Operating Instructions



Get Tutorial Videos

Scan the QR code to quickly view the video on the use of STORM.



Get Other Language Versions

If you need a Quick Start Guide in other languages, please scan the QR code to download.